




Innovative fiber laser
solution for high-speed
canning applications

Laser Marking Systems

Videojet® Lightfoot™ canning solution





Get ahead of the pack with a comprehensive fiber laser system tailor-made to set your beverage production up for success. SORIM HOLDING is proud to introduce the Videojet Lightfoot™ canning solution.

Seamlessly transition to laser with a system designed specifically for high-speed canning operations.

The all-in-one turnkey Videojet canning system combines the speed of dual Lightfoot marking heads with the reliability of advanced fiber laser technology to provide a solution designed to meet the demanding production needs and harsh environments of high-speed canning operations.

The comprehensive solution features a modular design to fit your space, IP69 rated marking heads suitable for your environment, and best-in-class safety measures to protect your operators.

Laser technology helps you focus on production instead of coding operations. With virtually no maintenance, no consumables, and a long laser life, you can expect high-quality, permanent codes with minimal effort.



Tailor-made for canning

Designed based on extensive beverage application expertise, the Videojet canning solution is purpose-built to deliver the quality, reliability, and performance needs of the high-speed beverage canning sector.



Run as fast as you can

Coding shouldn't be the bottleneck on your production line. Dual Lightfoot™ marking heads guided by a single controller help enable seamless coding at speeds of up to 100,000 cans per hour*.

*Speed capacity will vary based on application requirements.



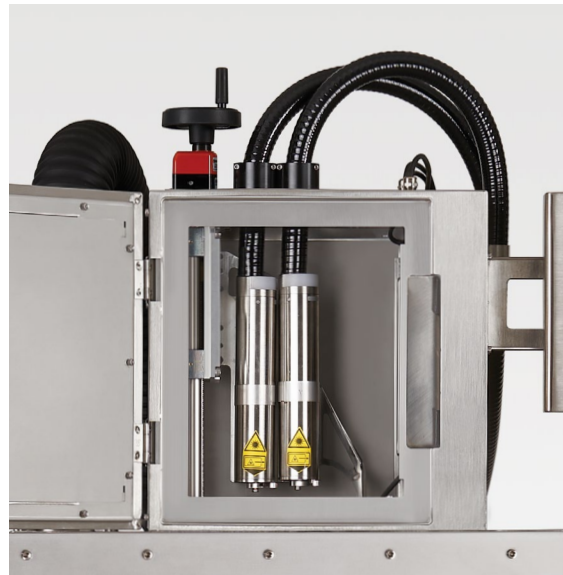
Handle tough environments easily

Humid and sugar-laden beverage canning environments can wreak havoc on standard coding solutions, resulting in illegible or missing codes. The Videojet canning solution features dual IP69 marking heads to easily handle these harsh environments and deliver a high-quality, clear code every time.



Washdown without disruption

Moving equipment off the line for production washdown is time and labor intensive. With an IP65 rated cabinet, everything can stay in place during washdown, making cleaning easier and faster.



Make total shutdowns history

Laser systems with a single marking head require complete line shutdown to repair or swap equipment in case of a fault. The Videojet solution features built-in redundancy with dual marking heads so you can adjust to single laser operation and keep the line running* even if the follower marking head goes down.

* Up to speeds of 50,000 cans/hour. Only leader laser can run in single laser mode and manual adjustment of laser settings will be required.

Complete solution in one package

The Videojet canning solution combines all safety, operating, and performance features into a comprehensive package. Instead of struggling to build a system using multiple suppliers and incompatible components, depend on Videojet to provide everything you need, including lifetime support built upon extensive application expertise.



Class 1 enclosure

Keep operators safe with a sealed enclosure that blocks all laser emissions, preventing any possible injury from optical radiation during operation.



Modular beam shield

Easily integrate onto your line with a beam shield that can be adjusted to fit your space.

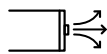


Fume extractor

Protect operators by removing aluminum dust and laser fumes.



* Included with ongoing maintenance contract



Air knife

Reduce cleaning needs by preventing dust build-up on marking head beam exit window.



Umbilical options

Position the supply cabinet enclosure where you want it with 3m or 10m umbilical lengths.



Vision integration capability

Verify code readability with an optional mount for compatible vision systems.



Standard industry protocols

Connect with common line integration and code management systems.



VideojetConnect™ Remote Service*

Be the first to recover with expert technical support and guidance remotely available on demand.

Fiber laser technology for high-speed canning applications

Easily migrate to a laser marking solution to take advantage of increased code quality, reduced maintenance, and no consumables. The Videojet canning solution is designed to make the switch seamless so you can focus on your production.



Minimal maintenance

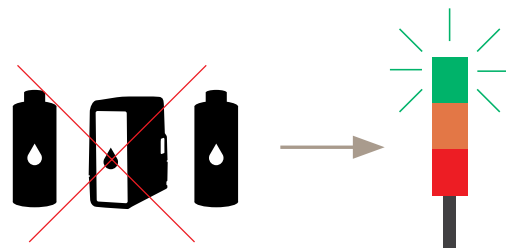


Minimized maintenance

Traditional inkjet coding solutions have time-consuming, costly, and often unexpected maintenance demands. With nearly zero maintenance required for the life of the lasers, the Videojet canning solution is a superior choice for the high-speed beverage sector trying to prevent downtime and surprise maintenance costs.

No consumables

Never have to worry about running out of ink and risking a line shutdown. Laser systems require no consumables so you never have to stock ink and solvent again.



Keep lines running



Clean permanent codes

Avoid code quality issues that require rework or scrap. Fiber laser codes are precise and permanent so you can consistently meet customer quality requirements.

Easier integration

Switching to a laser system on canning lines can be a difficult task with standard large and heavy laser marking heads. The Videojet laser solution features dual Lightfoot™ marking heads that are comparable in size and weight to Continuous Inkjet marking heads.

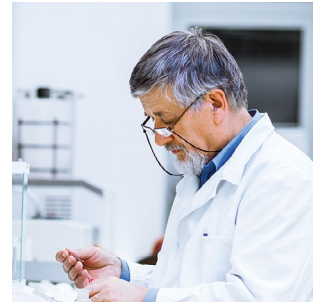
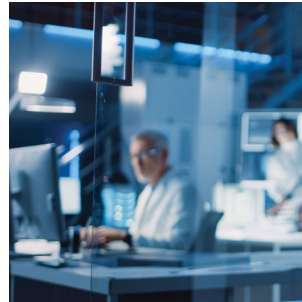


Partner with Videojet for productivity

Leverage ongoing application support, our advanced analytics and performance monitoring, and the largest service footprint in the industry.

Ongoing application support

Our sample lab technicians are on hand to validate your application at install and when it changes, providing personalized application support for the lifetime of your laser.



Videojet sample lab locations





First-to-know

Real-time notification of printer needs, warning or fault conditions.



First-to-react

Instant visibility to valuable printer and productivity information.

EtherNet/IP™



VideojetConnect™ Remote Service

Real-time remote visibility to printer issues helps enable both Videojet experts and your technicians to react sooner to faults, diagnose remotely, and recover the line faster.

Standard industry protocols

Reduce potential for human error by connecting to common line integration and code management systems.



Broad application expertise

With over 400,000 printers installed worldwide, our sales engineers are proven experts at helping ensure you have the right solution for your specific application.

Expert service on demand

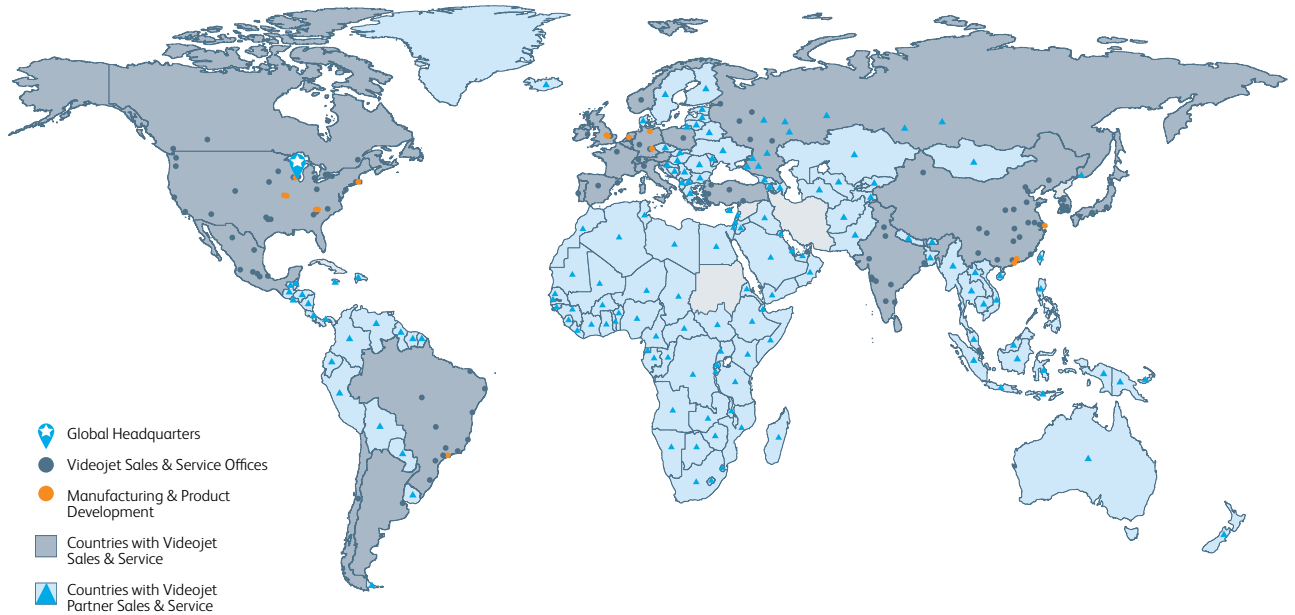
With the largest service footprint in the industry, Videojet onsite response time is unmatched. Our service technicians are highly trained and dedicated solely to maintenance and service needs.

Peace of mind comes as standard

Videojet Technologies is a world-leader in the product identification market, providing in-line printing, coding, and marking products, application specific fluids, and product LifeCycle Advantage™.

Our goal is to partner with our customers in the consumer packaged goods, pharmaceutical, and industrial goods industries to improve their productivity, to protect and grow their brands, and to stay ahead of industry trends and regulations. With our customer application experts and technology leadership in Continuous Inkjet (CIJ), Thermal Inkjet (TIJ), Laser Marking, Thermal Transfer Overprinting (TTO), case coding and labeling, and wide array printing, Videojet has more than 400,000 printers installed worldwide.

Our customers rely on Videojet products to print on over ten billion products daily. Customer sales, application, service and training support is provided by direct operations with over 4,000 team members in 26 countries worldwide. In addition, Videojet's distribution network includes more than 400 distributors and OEMs, serving 135 countries.



www.sorim-holding.com
info@sorim-holding.com

©2020 Videojet Technologies Inc. All rights reserved.

Videojet Technologies Inc.'s policy is one of continued product improvement. We reserve the right to alter design and/or specifications without notice.

Part No. SL000691
br-lightfoot-canning-1120
Printed in U.S.A.

